

# Quarterly Newsletter

## Abbeycliffe Residential Care Home

### New Residents

We give a big warm welcome to our new residents who have recently joined our Abbeycliffe family.

Joan



Irmgard



Winifred



Jack



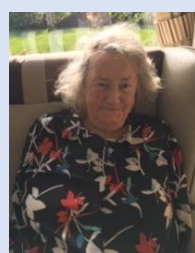
Florence



Edward



Iris



Josephine



We hope you settle in quickly and have a lovely time with us.



### Birthdays

Many happy returns to....

Joyce A

Jean W

Marjorie F

Valerie L

Marjorie C

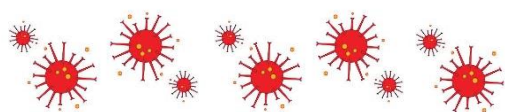
Rosemary H

Iris A

Mary C

Josephine S

We hope you enjoyed celebrating your birthday



## Coronavirus



It has been an extremely difficult time for everyone since the spread of Coronavirus hit the UK earlier this year. After being informed by the government that the elderly were the most vulnerable, we took the appropriate actions necessary to protect all our residents and decided to temporarily close the doors to all our family and friends.

We can appreciate this is a very difficult time for all our residents, families and friends. We have a duty of care to each of our residents and so their safety and wellbeing is our top priority.

We now have the facilities for families and friends to Skype their loved ones. Skype enables you to video chat with your chosen resident and this can be between computers, tablets or mobiles devices. If you wish to see and speak to one of our residents then please call the home for more details on 0161 850 2851.

The doors will be reopened to the public once we have been advised by the government that it is safe to do so. We thank you greatly for your cooperation during this challenging time and if you have any questions regarding this matter then please call the home and speak to a manager.



## Activities and Events

Abbeycliffe have unfortunately had to cancel all recently organised and upcoming activities and events, including all external entertainers coming into the home, due to the risk of COVID-19. However, spirits have been kept high with residents participating in our weekly activities schedule and additional activities such as arts and crafts, sing-a-longs and dancing.



**A big thank you to those who have donated items towards our Easter raffle. However, due to ticket sales being put on hold, we have also decided to put the raffle draw on hold until further notice.**

### 7<sup>th</sup> January, 4<sup>th</sup>/20<sup>th</sup> February & 3<sup>rd</sup>/17<sup>th</sup> March -

We've been getting our hearts racing and blood pumping with our very own exercise coach, Joe from Superstars Coaching.

### 11<sup>th</sup> January, 1<sup>st</sup> February & 7<sup>th</sup> March -

We've enjoyed Movie Nights on the big projector screen.



### 18<sup>th</sup> January -

We enjoyed eating fish and chips from our local chippy



### 21<sup>st</sup> January -

We enjoyed a performance from our regular entertainer Ian Jenkins. He also came to perform on 6<sup>th</sup> February for Marjorie C's birthday. Thank you very much to her family for this gift.



### 25<sup>th</sup> January -

To celebrate Chinese New Year the residents had a Chinese style buffet tea and participated in Chinese themed arts and crafts.

**Unfortunately, we have had to cancel our '10 Day Chick Hatching Programme Experience', however the money we have already raised for this event will go towards the same event being held in the future. The date is yet to be confirmed but we will inform you nearer the time.**



## Activities and Events Continued...

### 14<sup>th</sup> February -

For Valentine's Day we had an interactive performance from 'A Memory Choir' by Lucy.

She recited love poems and sung love songs to remind us of our pastimes.

We also had a romantic dinner prepared for our residents by our wonderful kitchen staff.



### 18<sup>th</sup> February -

Some of residents enjoyed a trip to The Moses Centre for the Chat and Craft session with 'Ambition for Ageing with Bury'. Unfortunately, since this event, we have learned that all events with 'Ambition for Ageing with Bury' have all been cancelled.



### 30<sup>th</sup> January -

For National Storytelling Week, some of our residents attended book club in the dining room where they read a story as a group.



### 16<sup>th</sup> February -

For Valentine's Day and as a special touch to those residents who have partners, we organised a romantic dinner date. Their partners were invited to Abbeycliffe to enjoy a 3-course meal with their loved one and they enjoyed it very much.



### 25<sup>th</sup> February -

The residents enjoyed preparing pancakes and decorating them for Shrove Tuesday. They particularly enjoyed eating them too!



## Activities and Events Continued...

**Our Mother's day afternoon tea event was unfortunately cancelled. All those relatives who purchased tickets will receive a full refund, please ask a manager if you have yet to receive your money.**

### 4<sup>th</sup> March -

The residents had their feet tapping and pom poms shaking to a group of Ukelele players called 'Ukes Like Us'.



### 22<sup>nd</sup> March -

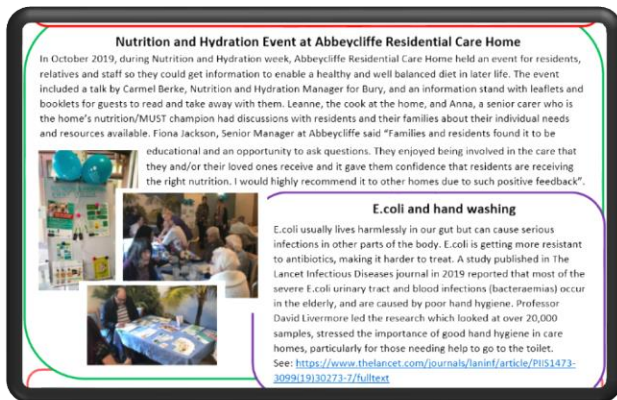
Unfortunately, due to the current situation, visitors were not allowed to visit on Mother's Day this year. However, we had a lot of families come to the window to see and wave to their loved ones. The residents really enjoyed this. They also enjoyed a special Mother's Day dinner that our wonderful kitchen staff prepared.





### Bury Council Newsletter

We were delighted to see and read about the Nutrition and Hydration Event that we held at Abbeycliffe last year in the 'Infection Prevention and Control Newsletter' for Bury. It was a great success and we thank all those who attended.



*Congratulations to Leah (Senior on nights) and your partner on your marriage. We wish you a lifetime of love and happiness.*



#### External Training

Well done to the following employees for completing training on:  
Legionella Awareness – Fiona, Simon and Sonia  
Infection Control – Clare and Louise

### Testimonial

*From Helen T – Daughter of resident – Jan 2020.*

*'Having made the devastating decision to put Mum in a care home, my brother and I arrived at Abbeycliffe unannounced. Having looked around several care home, we immediately knew this was the one. The manager welcomed us with open arms, showed us around all areas and answered all our questions. There was a real, happy vibe about the place. Mum has now been there a month, she's eating again, her room and all communal areas are spotless. Mum hasn't been easy to care for, but the staff have been amazingly patient with her and her care has been exceptional. I would like to take this opportunity to thank every one of the staff from Abbeycliffe – you are angels.'*

### 5 Years of Service, Bronze Award



**Well done to our Deputy Manager, Michelle, and Care Assistant, Keeley for recently achieving their 5 years of Service, Bronze Award.**

### A big warm welcome to Billy the Budgie



Billy has shown to be settling in well as the residents and staff treat him as one of their own. The first person to teach Billy how to say 'Hello' wins a prize!

## Other Notices Continued...

### Best Nan Award

Gladys was thrilled to receive the award for Best Nan from her granddaughter, Megan.



You can catch her winning moments in the 'Nan News' magazine – Edition 1.

#### Nan News

ISSUE 1

##### BEST NAN AWARD

We finally have a winner! GLADYS BURTON nee PREECE from the lovely Welshpool, Wales! Congratulations Gladys! Due to current events the Awards Ceremony has been postponed until further notice. In the meantime, we here at Nan News will share with you just a couple of Mrs Burton's winning moments.



With Husband Gordon at Powys Castle, Welshpool

Displaying Legendary Patience with Granddaughter Megan

We caught up with the winner's granddaughter, Megan... "Of course I wasn't surprised when the results were announced! My Nan definitely deserves this award and I hope she celebrates with some sherry. We'll all go and see her as soon as possible to celebrate. **Love you Nan!**" Touching stuff. Join us next issue for more on this story, and more photos.



Dan Eats Beans

### ACTIVITIES UPDATE

A new Activities and Events Schedule will be issued once our day to day business operations resume as normal.



Copies of the New Bank Garden Centre Magazine are now available in reception.

You will find our 2-page advert a couple of pages after the middle page...

**newbank**  
garden / airt / home



## Condolences

We have very sadly lost some of our residents over the past few months.

Our hearts go out to the families and friends of

**Marjorie F, Joyce C and William A**



We are very sorry for your loss and we will miss them all dearly. Please stay in touch.

## Contact us

Abbeycliffe Care Home

50 School Street

Radcliffe,

Greater Manchester

Lancashire

M26 3BP

Any inquiries please contact Fiona or Hayley on 0161 850 2851.

